

CBSE MIXED TEST PAPER-05

PREBOARD EXAMINATION

CLASS - X(MCQ)

SCINENCE

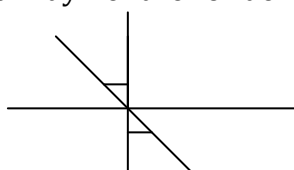
[Time: 1.30 hrs.]

[M. M.: 20]

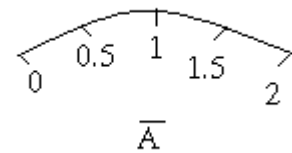
General Instruction:

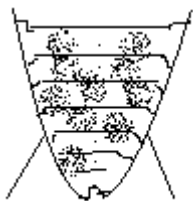
- (i) Attempt all questions.
- (ii) There are 30 multiple choice questions in total. Only one of the options in every is correct
- (iii) The questions paper consists of two parts - Section A and Section B. Each of the 20 questions in Section A carries 0.5 mark and each of the 10 questions in Section B carries 1.0 marks

Section A

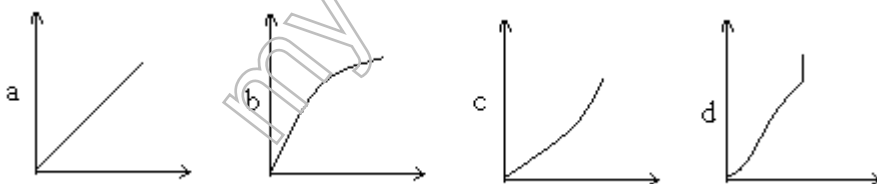
1. When vinegar reacts with baking soda, the gas evolved is:
a. CO₂ b. CO c. H₂
d. O₂
2. Refracted ray of an incident light is shown. The medium II is
a. Rarer b. Denser c. May Be rarer or denser
d. None of above

3. Stomata found on leaf is
a. An organ b. An organelle c. A pore
d. A single cell

4. Human cheek cell stained in methyl lene blue are mounted in glycerine and observed under a microscope. The components of the cell which would be seen are.
- cell wall, cytoplasm, nucleus
 - plasma membrane, cytoplasm, nucleus
 - plasma membrane, cytoplasm nucleus, mitochondria
 - plasma membrane, cytoplasm, nucleus mitochondria, golgi, lysosomes.
5. A liquid sample turned red litmus blue. This indicates that the liquid sample is of
- an alcohol
 - distilled water
 - sodium hydroxide
 - hydrochloric acid
6. All elements of the circuit diagram used to study ohm's law are connected in series except.
- Ammeter
 - Unknown resistor
 - Rheostat
 - Volt meter
7. Which of the following metals can replace copper from a solution of copper sulphate?
- Silver
 - Gold
 - Zinc
 - Platinum
8. The least count of the given ammeter is
- 0.05
 - 0.01
 - 0.03
 - 0.04
9. Onion peel is obtained from which part of the plant?
- Stem
 - bud
 - root
 - leaf
10. The missing part in the following sketch of a male cockroach is
- anal cerci
 - anal style
 - brood pouch
 - antennae

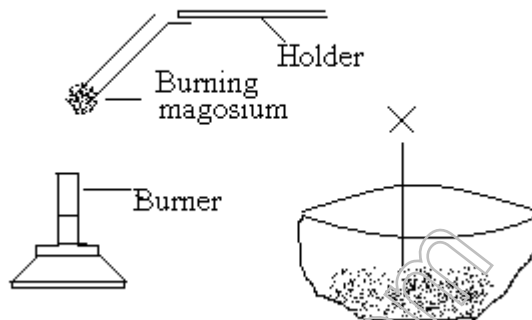




11. Rheostat is used to vary
- Resistivity
 - Current
 - Potential difference
 - Power
12. The reaction between iron and copper sulphate in water represents which type of reaction?
- Decomposition
 - Direct Combination
 - Single Displacement
 - Double Displacement
13. The angle of incidence, the angle of refraction and the refractive index are related by
- $n = \frac{\sin i}{\sin r}$
 - $n = \frac{\sin r}{\sin i}$
 - $n \sin r = \sin^2 i$
 - $n \sin i = \sin^2 r$
14. The most common mode of asexual reproduction is
- Budding
 - Binary fission
 - Fragmentation
 - Sporulation
15. The graph showing the variations of voltage V with current I is



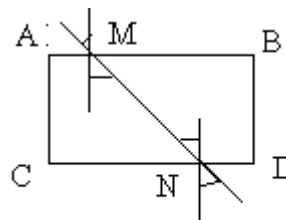
16. The nerve impulse travels fast in
- non-myelinated nerve fibre
 - myelinated nerve fibre
 - lower animals like mollusca
 - all of the above
17. What is X in given figure?



- a. Magnesium sulphide b. Magnesium c. Magnesium oxide
 d. Magnesium carbonate

18. For two parallel surface AB and CD of a medium, the angle made by refracted ray MN is shown. Then the correct relation is:

- a. $r_1 = r_2$ b. $r_1 = e$ c. $r_2 = i$
 d. none of these



19. Iron metal is placed in saturated zinc sulphate solution. After five minutes the iron metal is taken out. Which of the observations given below is true?

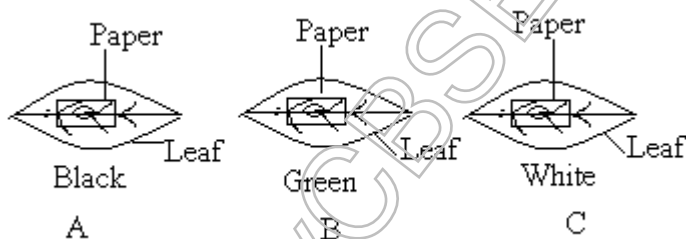
- a. Iron metal is covered with silver with silver gray deposit.
 b. No deposit is formed on the iron metal
 c. Iron metal is covered with black colored deposit.
 d. Iron metal is covered with blue deposit

20. Arrange the following metals in the decreasing order of activity

- 1) Fe 2) Pt 3) Na 4) Cu
 a. 1,2,3,4 b. 3,4,1,2 c. 3,1,4,2 d. 3,2,1,4

Section – B

21. When solid lead nitrate is heated in a test tube, what is NOT observed during the reaction is:
a. a crackling sound is produced b. a brown gas is produced
c. a light yellow solid is formed d. swelling of lead nitrate takes place
22. During the experiment to determine the amount of water absorbed by raisins which precaution is NOT required?
a. take raisins with intact stalks b. dissolve some solute in water to facilitate absorption
c. weighing must be accurate d. raisins must be soaked in sufficient water
23. A student added blue litmus, red litmus and pH paper in acetic acid solution taken in three different test tubes, Which of the following observations are correct?
a. Red, Blue, Orange b. Red, Red, Orange
c. Red, Blue, Blue d. Red, Blue, Green
24. The leaves of a potted plant were covered by black, green and white strips of opaque paper. Synthesis of starch will take place in the covered portion of which leaf?

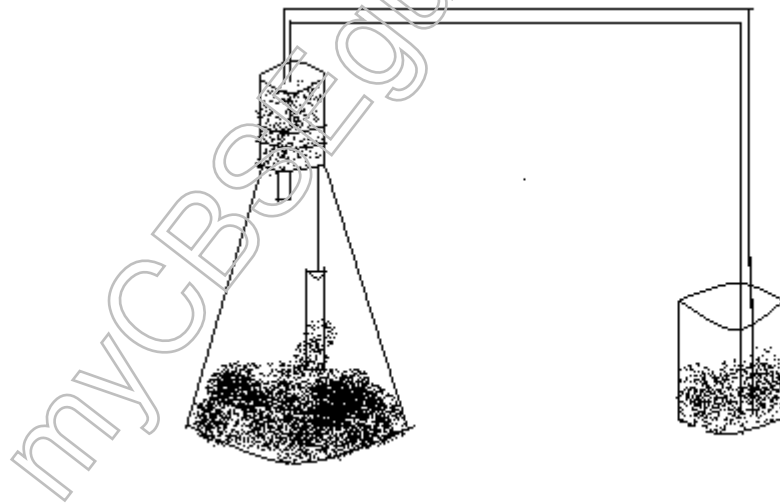


- a. A b. B c. C d. None of the above
25. Three resistors of 5 ohm, 6 ohm and 8 ohm are connected in series circuit. If the magnitude of current in 5 ohm resistor is 1A, the magnitude of current in 8 ohm resistor is
a. 0.67A b. 0.33A c. 2A d. 1A
26. The correct labeling of the following diagram is



- a. cytoplasm, stomata, epidermal cell
- b. nucleus, stomatal aperture, epidermal cell
- c. Cytoplasm, stomata, guard cell
- d. Nucleus, stomatal aperture, guard cell

27. During respiration by germinating seeds the water level rises in the bent tube because.
- a. Oxygen in the flask is used by the germinating seeds
 - b. Carbon dioxide is absorbed by lime water
 - c. There is a partial vacuum in the conical flask
 - d. All of the above



28. When two resistors R and $R/2$ connected in parallel the net resistance is
- a. R
 - b. $3R/2$
 - c. $R/3$
 - d. $2R/3$
29. The lens shown in the figure will behave as
- a. converging lens
 - b. diverging lens
 - c. converging on one side

d. diverging from plane



30. Shown below are the four experiment set ups. Experiments will result in repaid evolution of the following gases respectively.

a. H_2 , H_2 , CO_2 , CO_2

b. CO_2 , CO_2 , H_2 , H_2

c. H_2 , H_2 , CO_2 , No gas

d. No gas, CO_2 , H_2 , H_2

